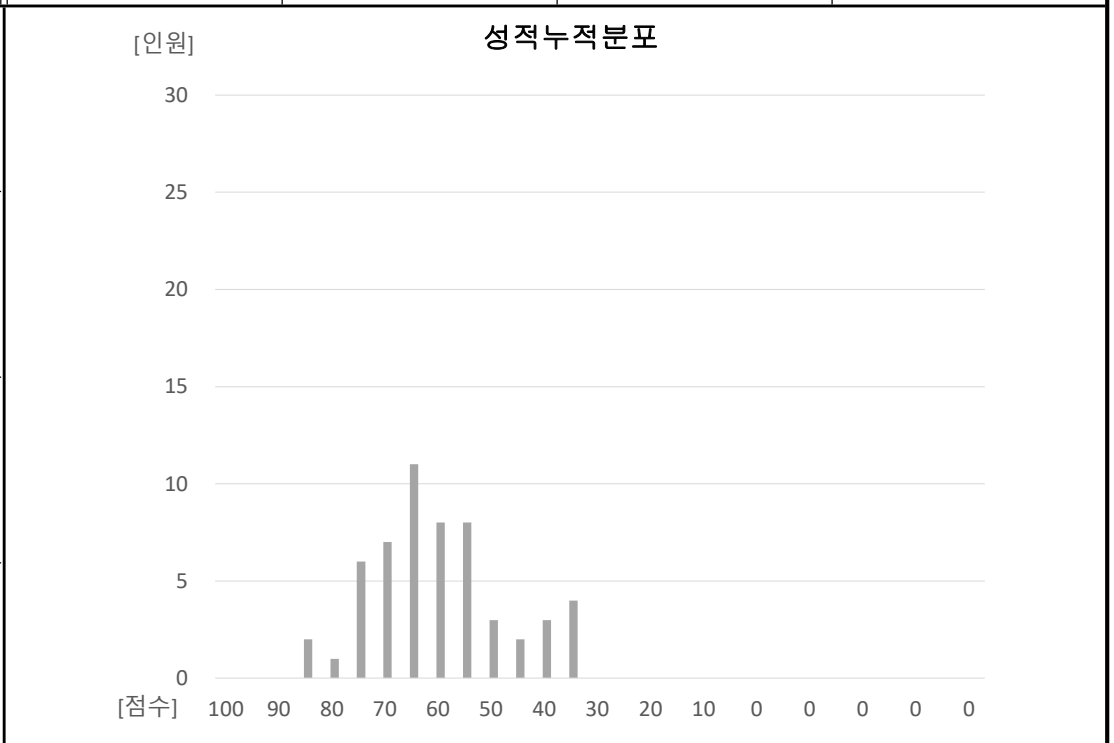


언어논리[집중강의] 3회 성적분포표

강사: 신성우

점 수	득점자수	분포율(%)	누 계	(%)누 적
100.00	0	0.00	0	0.00
95.00	0	0.00	0	0.00
90.00	0	0.00	0	0.00
85.00	2	3.64	2	3.64
80.00	1	1.82	3	5.45
75.00	6	10.91	9	16.36
70.00	7	12.73	16	29.09
65.00	11	20.00	27	49.09
60.00	8	14.55	35	63.64
55.00	8	14.55	43	78.18
50.00	3	5.45	46	83.64
45.00	2	3.64	48	87.27
40.00	3	5.45	51	92.73
35.00	4	7.27	55	100.00
30.00	0	0.00	55	100.00
25.00	0	0.00	55	100.00
20.00	0	0.00	55	100.00
15.00	0	0.00	55	100.00
10.00	0	0.00	55	100.00
5.00	0	0.00	55	100.00
0.00	0	0.00	55	100.00
0.00	0	0.00	55	100.00
0.00	0	0.00	55	100.00
0.00	0	0.00	55	100.00
0.00	0	0.00	55	100.00
0.00	0	0.00	55	100.00
0.00	0	0.00	55	100.00
0.00	0	0.00	55	100.00
0.00	0	0.00	55	100.00
0.00	0	0.00	55	100.00
0.00 미만	0	0.00	55	100.00

응시인원
55
평균득점
60.45
상위20%평균득점
74.38
최고득점
85.00



언어논리[집중강의] 3회 정답율

강사: 신성우

문항	1	2	3	4	5
1	43.64	5.45	3.64	12.73	32.73
2	16.36	9.09	63.64	1.82	7.27
3	1.82	10.91	81.82	3.64	
4	1.82	9.09	5.45	76.36	5.45
5	3.64	1.82	3.64	87.27	1.82
6			5.45	90.91	1.82
7	12.73	5.45	34.55	5.45	40.00
8		3.64	85.45	9.09	
9		9.09	7.27	76.36	7.27
10	1.82	7.27	85.45	5.45	
11	1.82	34.55	49.09	5.45	9.09
12	47.27	10.91	9.09	21.82	9.09
13	12.73	23.64	12.73	43.64	7.27
14	7.27	5.45	5.45	58.18	23.64
15	1.82	27.27	10.91	41.82	16.36
16	10.91	10.91	36.36	20.00	21.82
17	9.09	21.82	18.18	40	10.91
18	38.18	18.18	23.64	14.55	5.45
19		5.45	72.73	5.45	14.55
20	1.82	5.45	21.82	1.82	67.27
21					
22					
23					
24					
25					
26					
27					
28					
29					
30					
31					
32					
33					
34					
35					
36					
37					
38					
39					
40					